








# Installation and finishing instructions hidden doors

**HOSET**

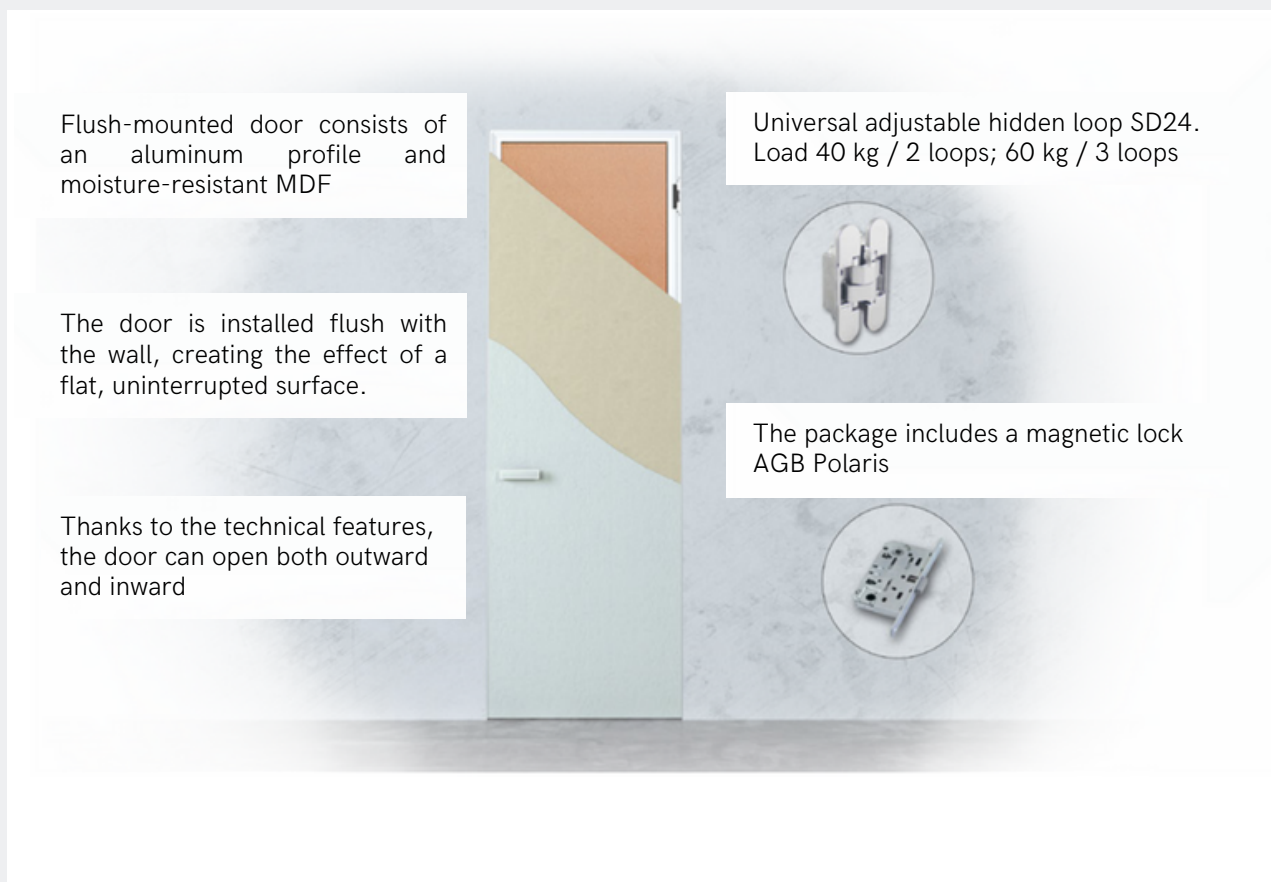
# Contents

---

Complete set of the door block concealed installation	<u>3</u>		 
Description	<u>4</u>		
Opening requirements	<u>5</u>		
Installation instructions	<u>9</u>		
Our contacts	<u>16</u>		

# Complete set of the door block concealed installation

1. Aluminum box ("Standard", "Universal", "Premium");
2. Door leaf (aluminum, panel board);
3. Magnetic lock mechanism "AGB Mediana Polaris";
4. Concealed mounting hinges adjustable in 3 planes;
5. Hinge protection;
6. Sealant;
7. Set of mounting plates and corners;
8. Insert-instruction (sent by e-mail);



# Description

Concealed box made of high quality aluminum profile, covered with a decorative anodic oxide coating and is a U-shaped structure with prepared millings for hinges and accessories.

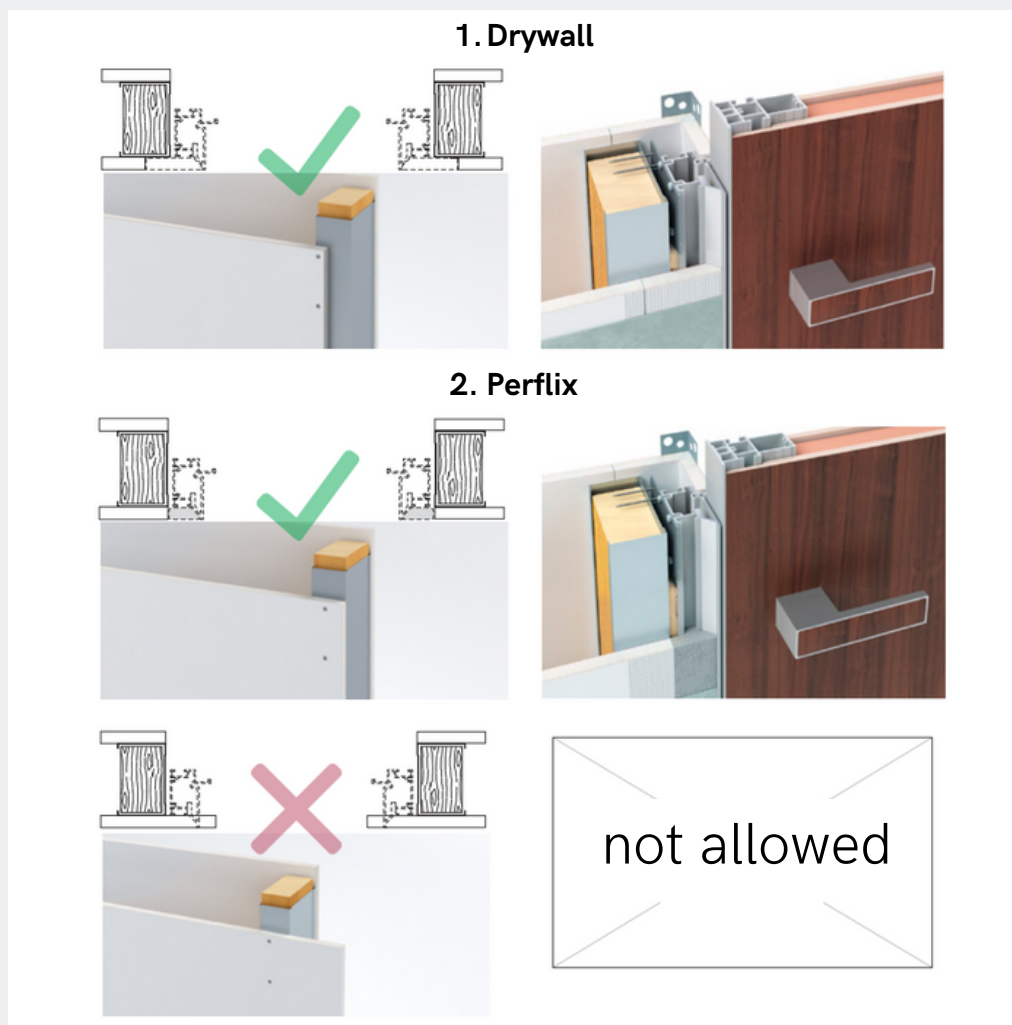
To ensure the rigidity of the structure and the invariance of the geometry box during storage, transportation and installation, the product is delivered assembled (with hinges, a lock mechanism and sealant). Installation of concealed doors is possible in various door openings.



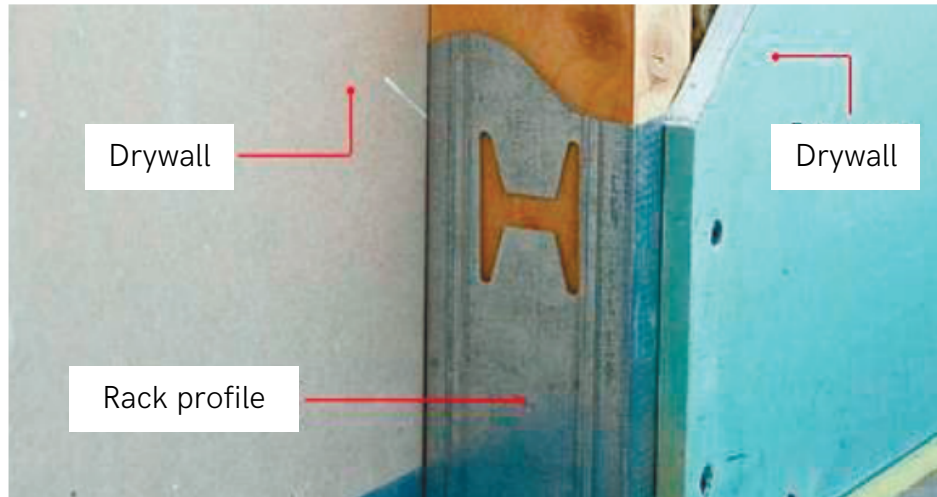
# Opening requirements

## 1. Installation of a hidden door block in a drywall opening

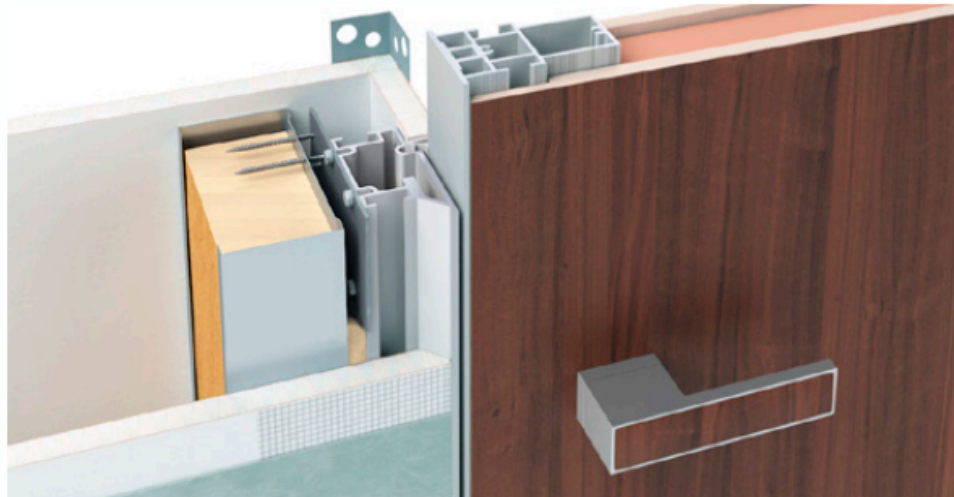
When preparing the opening of plasterboard walls, it is recommended to use a reinforced profile (wall thickness 3 mm), in which it is necessary a bar of at least 50 \* 40 mm is laid in the standing frames. Recommended location of the profile in the area of the doorway and subsequent tiling frame with drywall sheets are listed below.



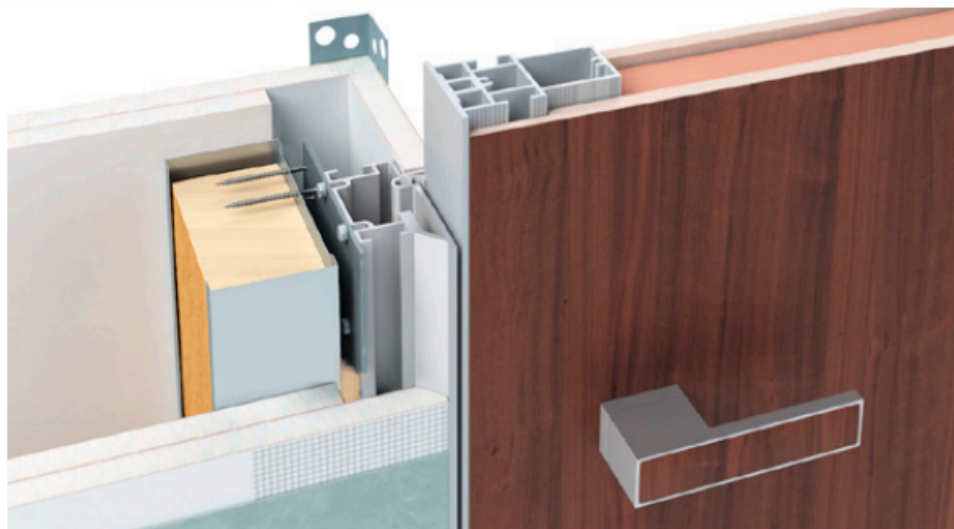
### Strengthening the opening with a bar



### Installation of a block with one sheet of drywall



### Installation of a block with two sheets of drywall



## 2. Installation of a hidden door block in an aerated concrete opening (foam concrete, tongue-and-groove blocks)

When installing a door block in an opening formed from aerated concrete (foam concrete) blocks, it is mandatory to strengthen the doorway plywood or OSB with a minimum thickness of 20 mm.

For this strip plywood/OSB are rigidly mounted along the height of the opening from the hinge and lock part of the future door. During installation, glue or other construction materials are used. mixtures (such as Perfix).

Additionally, it is recommended to "screw" the plywood strips to the slopes with screws and special fasteners for the gas block

**Strengthening the doorway (false box)**



**Installation of the block in the opening of aerated concrete**

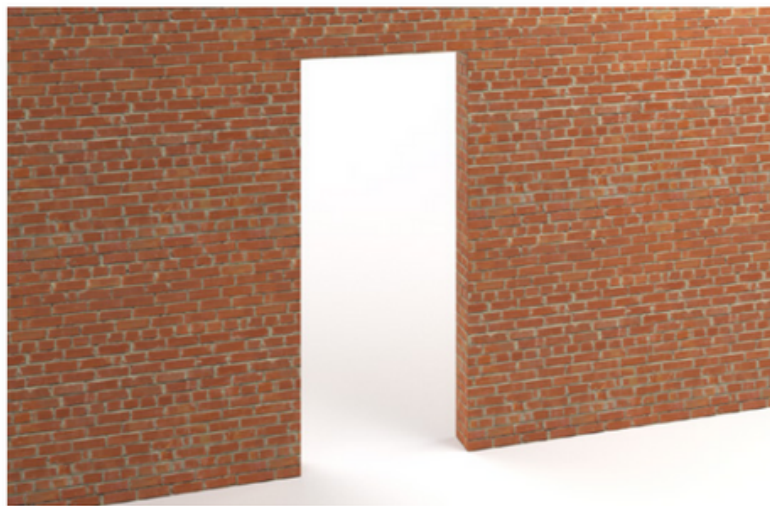


### 3. Installation of a hidden door block in a brick (concrete) opening

When installing a hidden door block in a solid (capital) brick/concrete wall opening does not require additional reinforcement. WITH the outer and inner sides of the opening must be strictly vertical and must not have constrictions (deviation must not exceed 2 mm per 1m height).

To ensure adhesion between brick/concrete and foam, dust the opening (with water or a primer).

**Strictly vertical brick opening**



**Installation of the block in a brick opening**





# Installation instructions

## 1. Installing the door block

The installation of the block in the prepared opening is carried out before the finishing of the walls. Installation is carried out on a finished floor or a predetermined level of a finished floor, on temporary underlays. The gap between the door leaf and the finished floor is 10 mm by default.

The works are carried out in four stages\*:

Stage 1 - installation of the box in the opening, assembled with the canvas.

Stage 2 - dismantling the canvas from the hinges (to avoid damage during finishing work, protect the hinges with masking tape).

Stage 3 - finishing work should be carried out only with installed hinges in the box.

Stage 4 - installation of the canvas / adjustment of the canvas and accessories.

\* - Installation of the door block in one stage is allowed. In this case, it is necessary to protect the canvas during finishing work (for example, use a dense polyethylene film.)

1) Before installation in the opening, mounting plates are attached to the box.

2) Next, with the help of wedges, we fix the upper part of the box (jumper), which is set parallel to the level of the finished floor.



3) After that, we align the loop side and check the level in 2 planes, using a laser level and a rule.

4) We check the box at the floor level, with the help of wedges we adjust and fix the opposite part of the box.



5) Spot foam the box from all sides.

6) When the mounting foam dries, we check the level and planes (in the ajar position, the door should not spontaneously open or close).

7) After that, we completely fill the gap between the wall and the box with foam.

8) Leave the door block until the foam is completely dry (at least 12 hours).

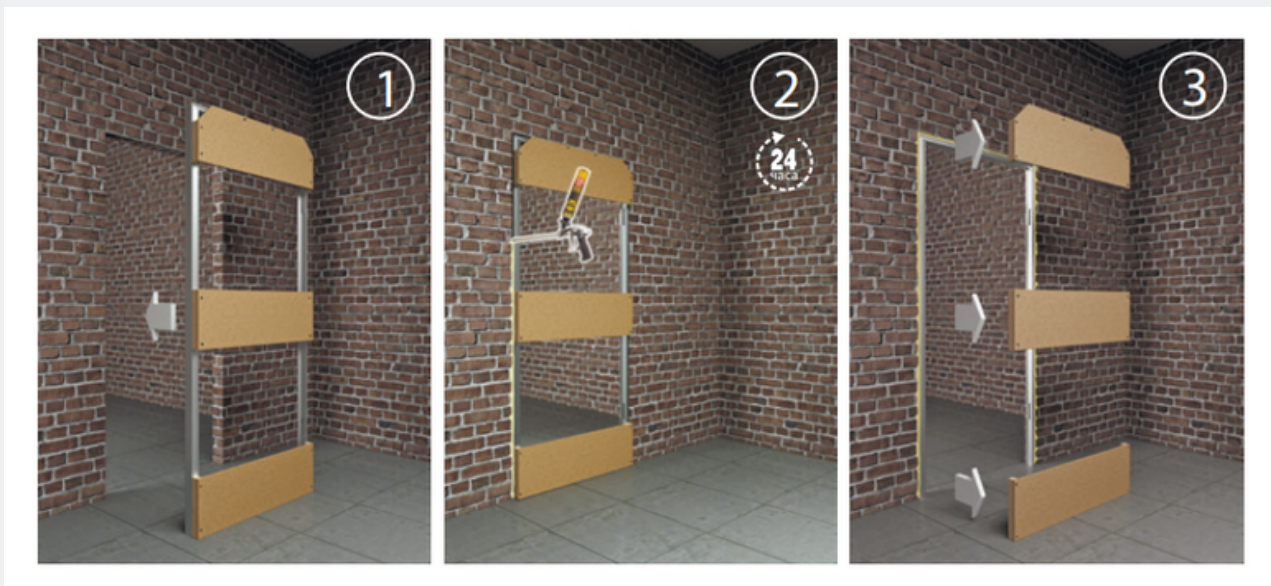
9) After the foam has completely dried, carefully pull out or cut off the wedges and the protruding foam. Dismantling of spacers is recommended to be carried out without knocking out - by cutting.

10) With the help of mounting angles and plates, we additionally fix the box in the opening. It is important to ensure a complete connection of the wall and the box.

Attention: When the foam polymerizes, it expands, which can cause deformation of the door frame elements. Therefore, it is necessary to close the door and insert cardboard spacers between the door leaf and the frame to ensure that the door gaps remain unchanged.

To reduce the production time, in agreement with the manufacturer, the order can be shipped in two stages: boxes with spacers are shipped within 2-3 weeks - to install the box in the opening and continue repair work at the facility;

The spacers on the box are three horizontal rigidly fixed jumpers imitating the canvas with correctly set "distances" (web dimensions + technical clearances of the box, canvas). Installation of a box with jumpers is carried out similarly to the installation of a box with a canvas (see article 12). Dismantling and reinstallation of jumpers before the box is firmly fixed in the opening is NOT ALLOWED.



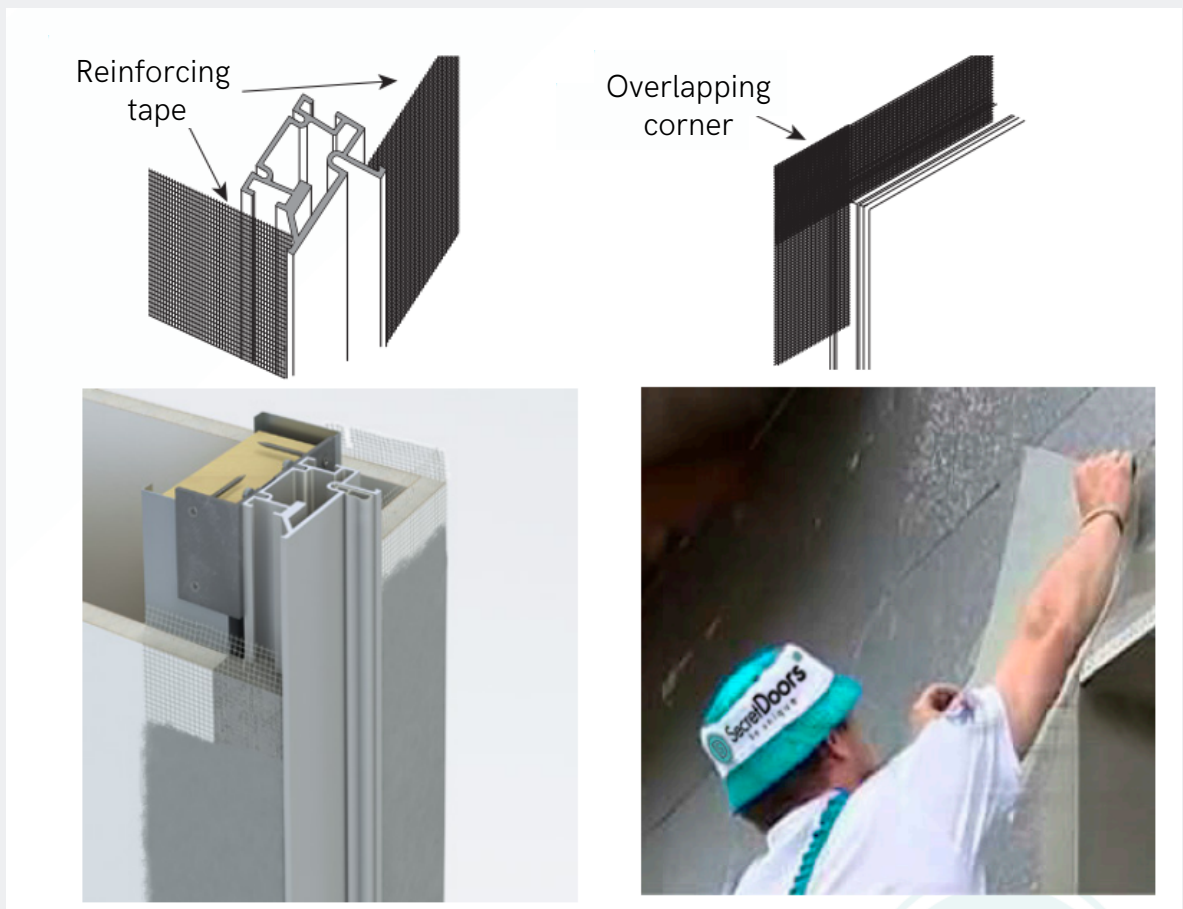
### **Installation of SecretDoors without canvas:**

1. Installation of the box in the opening, assembled with spacers from OSB.
2. The box is foamed with mounting foam from all sides.
3. Dismantling the spacers.

## 2. Sealing

When starting finishing work, it is necessary to take care of the adhesion of plaster mixtures with a smooth aluminum surface. To do this, "betonokontakt" is applied to the surface of the aluminum box interacting with the mortar with a brush or roller. For further sealing of joints and the device of the primary layer preventing further cracking, polymer-cement starter putties are used that contain reinforcing microfibers or add reinforcing fiber to the solution, with the help of which a strong, stable bond is formed throughout the entire volume of the solution.

As a result, the strength index of the finished product increases many times and the likelihood of cracks and shrinkage is eliminated, the elasticity of the solution improves.



### 3. Finishing (painting) canvas

At the request of the customer, SecretDoors doors can be supplied without a finish coating - primed for further finishing / painting. The primer protects the product from atmospheric influences and mechanical damage, and also improves paint contact with the door surface.

Finishing work should begin with the removal of the top layer of the primer: to prepare for painting, the surface of the canvas must be sanded with sandpaper 150-240. For high-quality painting of the canvas, it is recommended to remove it from the hinges and lay it in a horizontal position. For coloring, it is enough to use a roller, squeezing it well from the paint. First, one side is painted, after it dries, the other, and only then proceed to the ends. Sometimes after applying the first coat of paint, the resulting color is different from the desired one, in order to achieve the desired color, it is necessary to apply a second coat.

Since the MDF and wooden beams that make up the door leaf can absorb moisture unevenly, the painting of the canvases for further finishing at the facility must be done immediately on both sides: after painting one side, paint over the other. Only after complete drying of the paint layer on both sides, if necessary, re-paint. The drying time of the paint is always indicated on the original packaging, after applying each layer, be sure to wait until it is completely dry. Do not forget that the lock and hinges are not painted, but left in the factory coating.



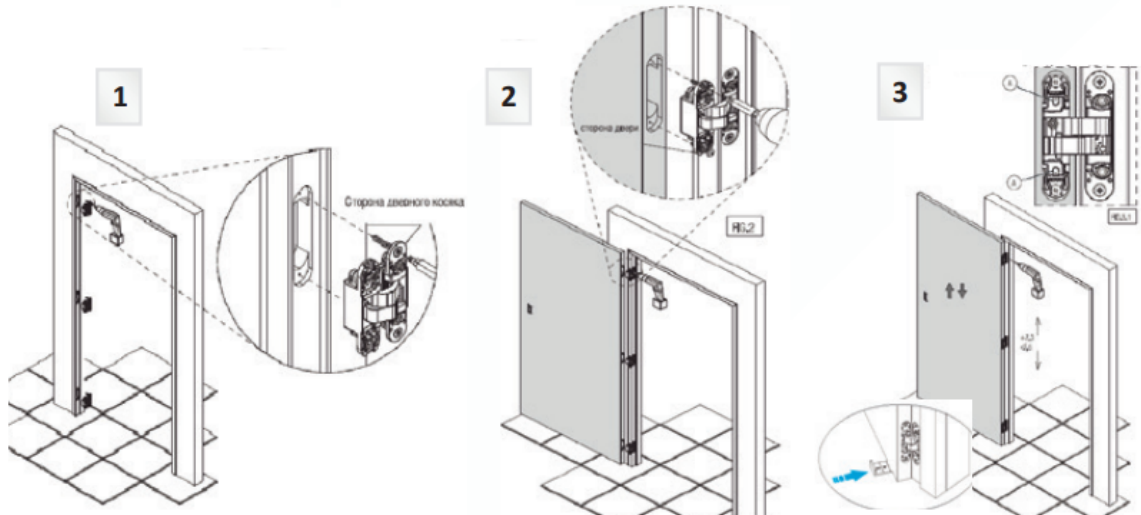
The canvas needs pre-sanding



Next, a finish coat is applied on both sides.

## 4. Hinge adjustment

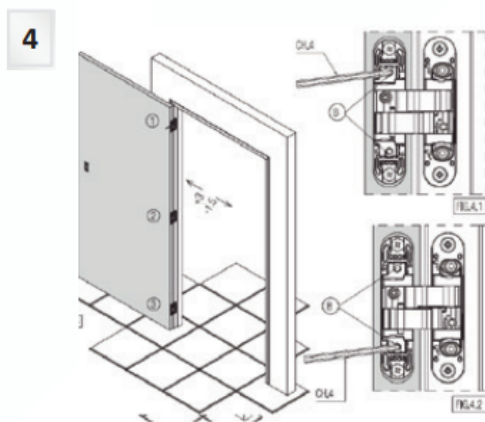
After the completion of the finishing work, the canvas is hung on hidden loops that allow you to adjust the position of the canvas in three planes.



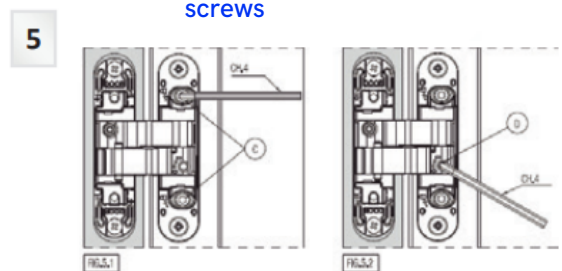
1. Install the hinges in the grooves in the door box. Fix with screws

2. Hang the door leaf on loops. Fix with screws

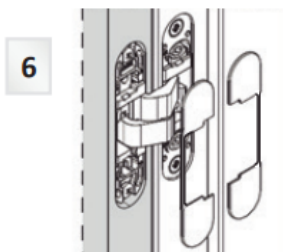
3. Loosen the clamping screws "A". Adjust door to height by lifting it with wedge to the desired height. Fix the screws



4. Adjust the door by turning screws "B". Repeat the adjustment on all pets in a row



5. Loosen screw "C", adjust the door by turning screw "D". Tighten screw "C". Repeat the adjustment on all loops in a row, starting from the top.



6. Install decorative caps



Hinge adjustment is only with a hexagon!



## 5. Adjustment of the lock response

Web pressure adjustment up to 1.5 mm - by means of a simple turning the striker by 180°.



## 6. Seal

The door unit is equipped with a seal designed for web thickness 40 mm.



When finishing with a layer >2 mm, we recommend contacting the sales to replace with a thinner one.



# Our contacts



044 744 1465



myynti@honet.fi



MiiA Rakennus Oy, Akerlundinkatu 11A,  
33100 Tampere



Open: by appointment



Call center daily from 9:00 to 22:00

Scan or click

CLICK  
ME



SCAN  
ME



UP!

HONET